

GA FLAT PLAN - UNIT_2_13A_M4(3)
Scale: 1:25

2-13 - PLOT NUMBERS

| Flat Type | Plot Number | FFL_01_B4 | Block/Building |
|-----------|-------------|-----------|----------------|
| 2-13A | 141 | FFL_01_B4 | B4 |
| 2-13A | 148 | FFL_02_B4 | B4 |
| 2-13A | 155 | FFL_03_B4 | B4 |
| 2-13A | 162 | FFL_04_B4 | B4 |
| 2-13B | 135 | FFL_00_B4 | B4 |

2-13 - UNIT TYPE

| Flat Type | NIA | Tenure | Occupancy | Area (sq-ft) |
|-----------|-------------------|--------------|-----------|------------------------|
| 2-13A | 93 m ² | Private Sale | 2B4P WCH | 1004.8 ft ² |
| 2-13B | 93 m ² | Private Sale | 2B4P WCH | 1005.1 ft ² |

GA KEY

Dimensions

- Dimension to finishes
- Boxing Setting Out
- Dimension to internal walls (finish face to finish face)
- Dimension to electrical fixtures/ fittings
- Dimension to fire detection equipment

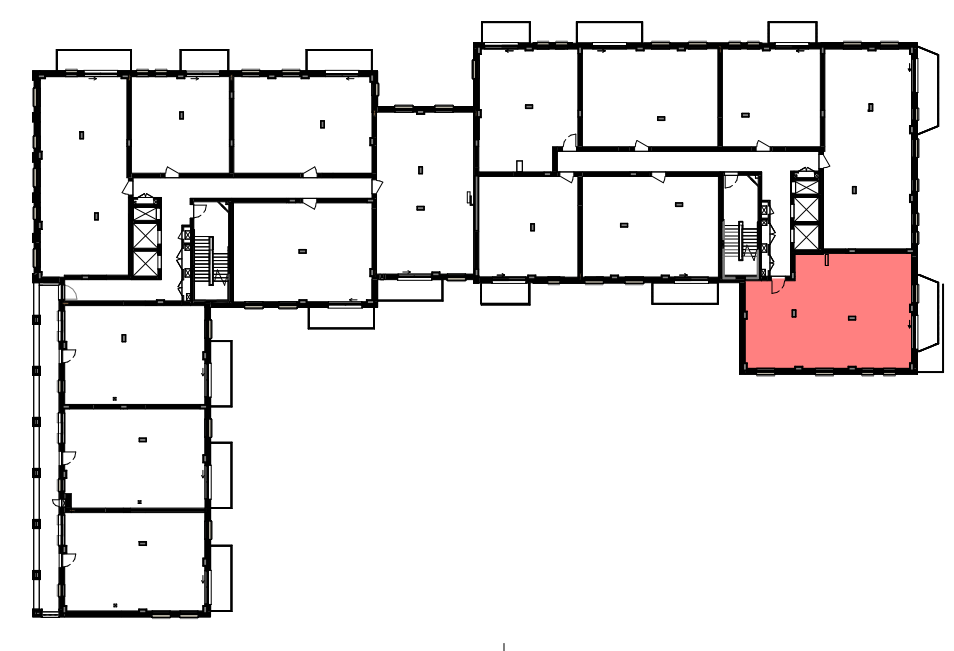
Floor Tag

- L1 LVT Flooring
- C1 Carpet Flooring
- T1 Tile Floor
- P1 Pavers to Amenity

Transition strip: LVT/Tiled Flooring (positioned under door leaf)

Transition strip: LVT/Carpet Flooring (positioned under door leaf)

Transition strip: Tiled/Carpet Flooring (positioned under door leaf)



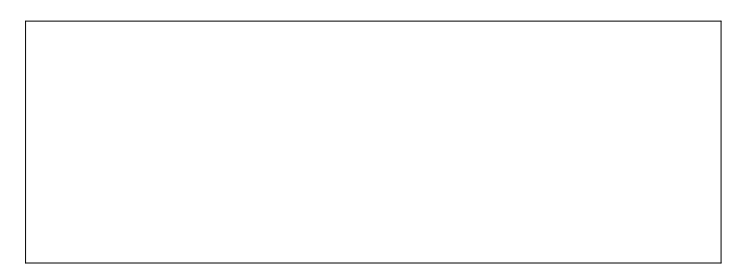
RCP ELECTRICAL STRATEGY SYMBOL LEGEND

- Door Entry System with Video
- Door entry phone with remote door release
- Thermostatic heating control
- 1 Gang light rocker switch
- 1 Gang 2 way rocker switch
- 1 Gang 3 way rocker switch
- 2 Gang wide rocker switch (note: bathrooms contain a 2-gang switch one for the lights and one rocker switch for MVR boost @ 1150mm AFFL. See drawings 03660 & 03662)
- 3 Gang wide rocker switch
- Energy efficient batten fitting
- Recessed LED low voltage power downlighter
- Wall mounted fitting
- External sounder
- TV socket
- Pendant light fitting
- Shaver socket
- Double 13a switched socket outlet (note: switches on sides of plate)
- Double 13a switched socket outlet with USB outlets - refer to CP specification for details (note: switches on sides of plate)
- 45A Hob connection unit
- Unswitched fused connection unit for cooker hood
- Unswitched fused connection unit for undercupboard lighting
- 13A unswitched socket outlet for dishwasher
- 13A unswitched socket outlet for integrated fridge freezer
- 20A flex outlet plate for integrated oven
- Multi gang engraved switched fuse connection unit (above kitchen worktop)
- BT socket
- Fused spur, suitable for fitting of powered door opener, install 75mm above door opening to centre line of fused spur
- Media plate - refer to CP specification for further information
- 1 gang blank plate with provision for bedhead controls in the future - refer to drawing 03660, elevation 02
- Socket for Door Entry Phone with door release (suitable for table top handset)
- Towel radiator (note: controls to be between 700-1000mm above FFL)
- Radiator (note: controls to be between 700-1000mm above FFL)
- Ceiling mounted vent grille linked to fan unit
- Air Brick - Exhaust
- Air Brick - Intake
- High-level duct routes
- S = Smoke detector with sounder
- H = Heat detector with sounder
- Sprinkler head
- LED lights under the wall units (except under hood cabinet)
- Pattringing requires on either one or both sides of the partition wall. Please refer to 03660 series for pattringing details.

- NOTES**
- KITCHEN SOCKET SETTING TBC - AWAITING KITCHEN SUBCONTRACTOR DRAWINGS.
 - 63MM THICK SACRIFICIAL LINING TO KITCHENS - REFER TO DRY LINING DETAIL.
 - ALL RADIATORS' SIZES UPDATED PER MWL COMMENTS AND THEIR LOCATIONS (WHERE ACHIEVABLE) IMPLEMENTED PER COUNTRYSIDE REQUEST.
 - ALL MVR DUCTWORK ROUTES ARE INDICATIVE ONLY - BASED ON MWL LAYOUTS. FINAL ROUTES TO M&E SPECIALIST SUBCONTRACTOR DESIGN & INSTALLATION.
 - ALL SERVICES & CONTROLS TO COMPLY WITH BUILDING REGULATIONS AD PART M1, SECTION 3.4.4

Notes:

- Do not scale from this drawing; work to figured dimensions only.
- All information is to be checked on site for accuracy and fit.
- Report any discrepancies and omissions to RMA Architects.



GENERAL NOTES

All work to be to current British Standards, NHBC Technical Standards, Building Regulations. All products to have a use specific BBA Agreement certificate.

Refer to other RMA drawings:

- 0000 BIM Models /2D - Strategy /Planning diagrams
- 1000 GA Plans / GA Flat Layout
- 1400 Fire strategy Plans
- 2000 GA Elevations & Sections
- 2400 Fire strategy Elevations
- 3000 Detail Drawings
- 4000 Lift and Stair core
- 5000 Schedules
- 6000 Bathrooms

Read in conjunction with other consultants information:

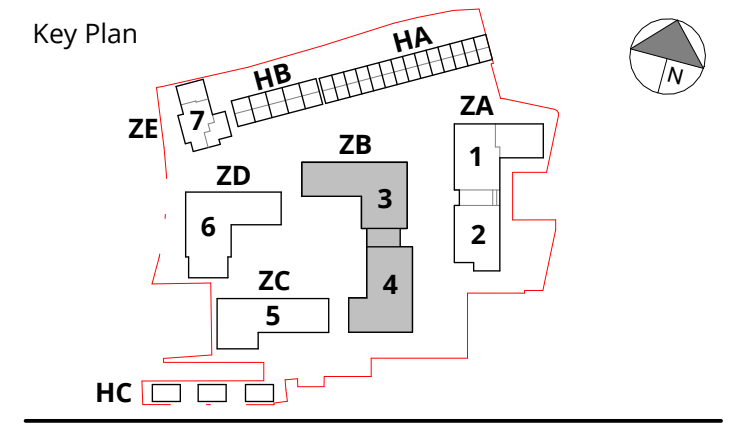
- Brand Consulting - for structural and civil information
- MWL Group - for MEP services & utilities information
- LDA - for external finishes and landscape information

Where drawings are issued "AS BUILT"
Vistry East London (Vistry Group PLC) are deemed to have verified that the building has been built as the design information on the relevant drawing.

| Rev | Date | Description | By | Chkd |
|-----|----------|--|------|------|
| A1 | 20.06.25 | AS BUILT | RR | JLee |
| C4 | 18.03.25 | Plot 135 Bathroom Note Added | JLee | MMc |
| C3 | 17.10.24 | Storage Cupb Socket Omitted & Radiator Size Amended | JLee | MMc |
| C2 | 30.08.24 | Updates to structural opening sizes for all internal doors | JR | JLee |

RMA

320C Highgate Studios
53-79 Highgate Road, London, NWS 1TL
London NW5 1TL
020 7284 1414, rmaarchitects.co.uk © RMA



Project: **Marlowe Road Phase 2b&3**

RMA Project Reference: 2226

Client: **COUNTRYSIDE**
Places People Love

| Scale | Date | By | Checked |
|-------------------|--------|----|---------|
| As indicated @ A1 | DEC 22 | JR | JLee |

Drawing Title

ZONE ZB - BLOCK 4
DETAILED FLAT PLAN
UNIT 2_13 - PRIVATE 2B4P - M4(3a)

| Purpose of Issue | Status Code |
|----------------------------------|-------------|
| AS BUILT | A5 |
| Drawing No | Revision |
| B00057- RMA- ZB- ZZ- DR-A- 01732 | A1 |